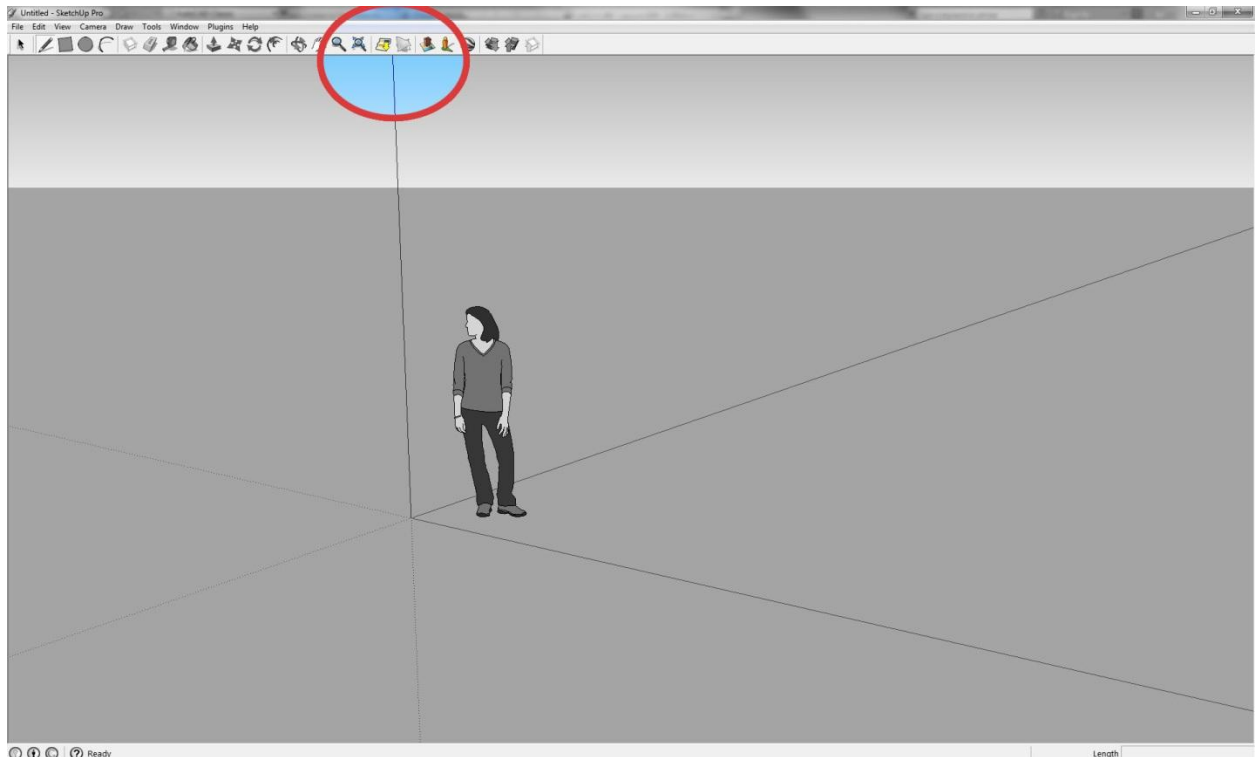


Importing Google Earth Terrain to Google Sketchup BIM Wiki

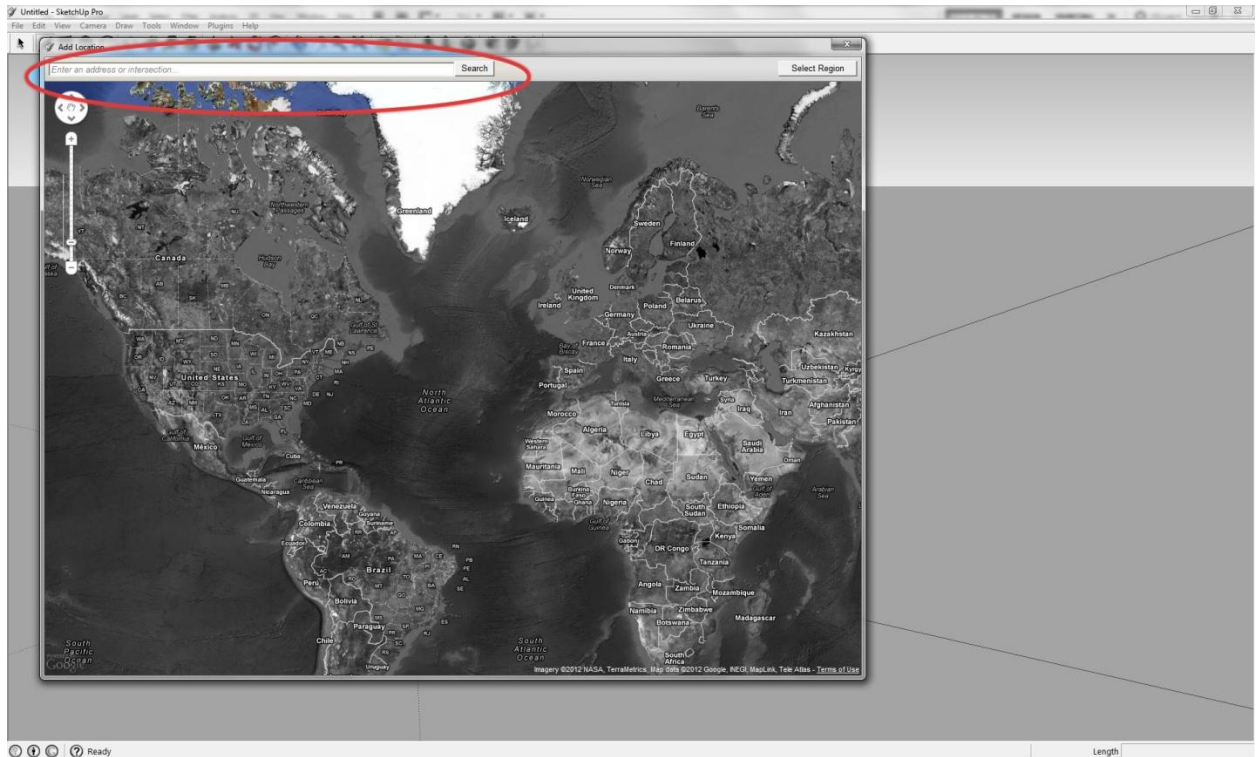
This tutorial will walk through the steps of importing Google Earth Terrain and aerial imagery. The benefit of this is the ability to quickly import site terrain for massing models. The aerial imagery in the model also allows for the ability to easily trace over surrounding building and site elements.

1. Open a new Sketchup document.
2. Click the 'Add Location...' button on the toolbar:

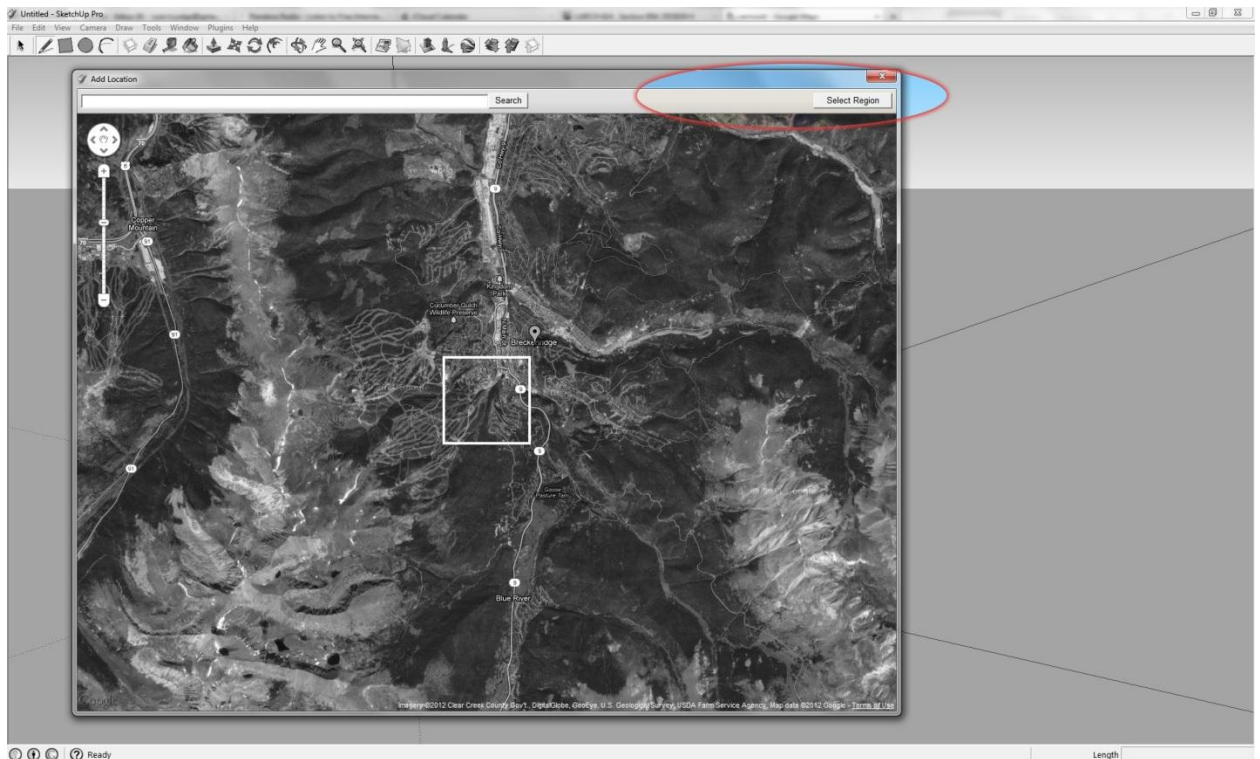


3. Enter a location – the white box represents the area which will be brought into the Sketchup model.

Importing Google Earth Terrain to Google Sketchup BIM Wiki

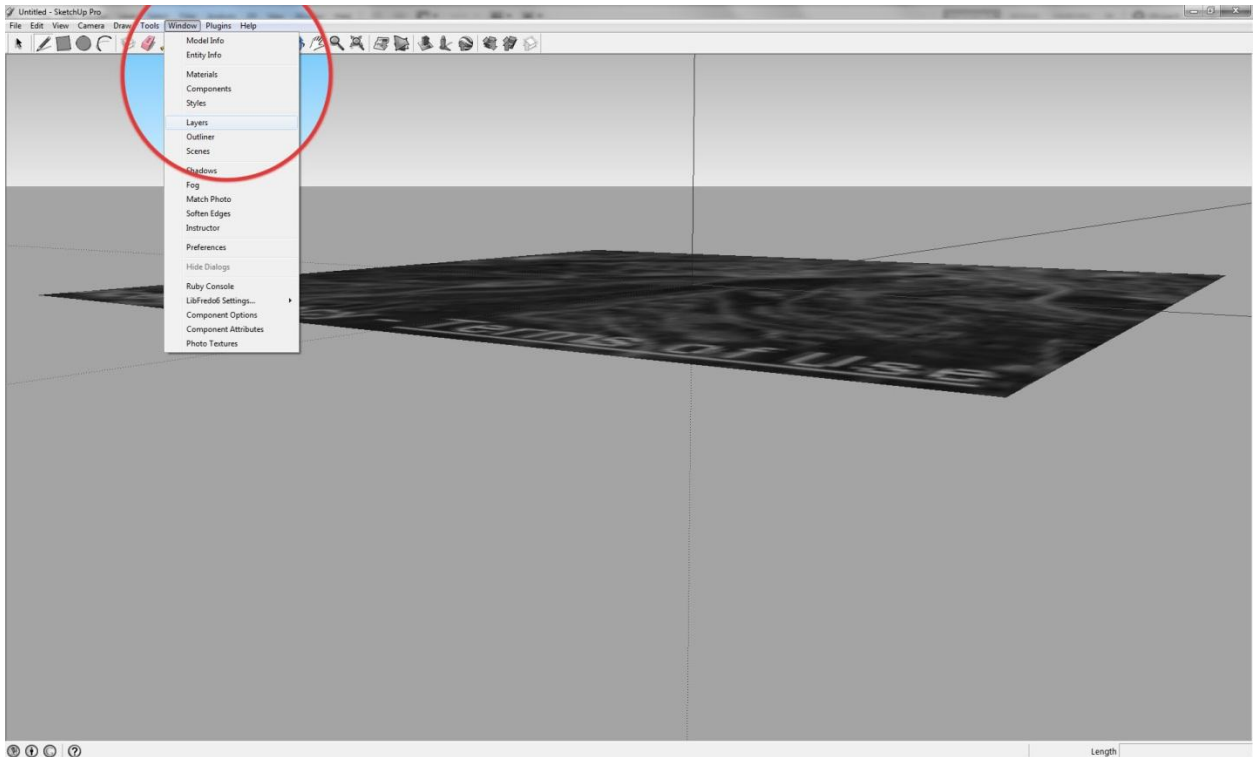


4. Click 'Select Region' in the upper right of the window.

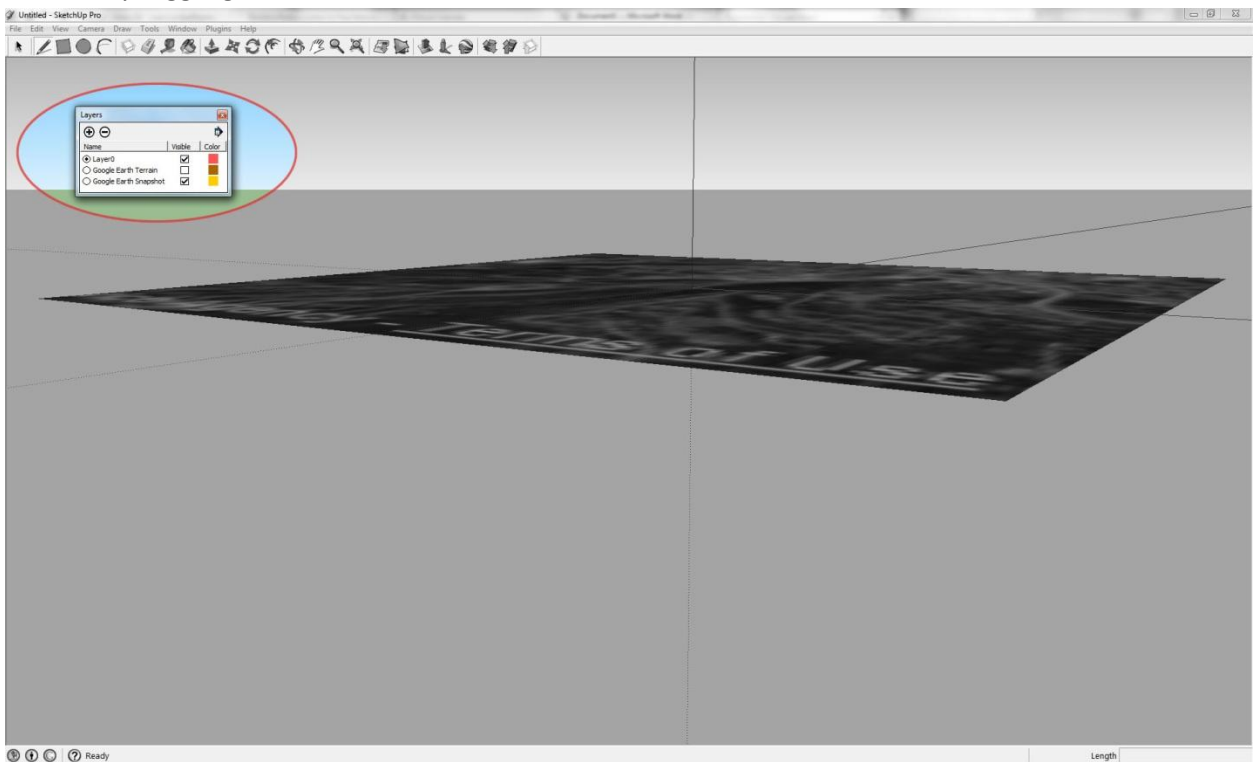


5. Select 'Grab' in the upper right of the window. This will directly pull the Google Earth Image into the Sketchup File.
6. Click 'Window' in the top menu bar then select 'Layers'

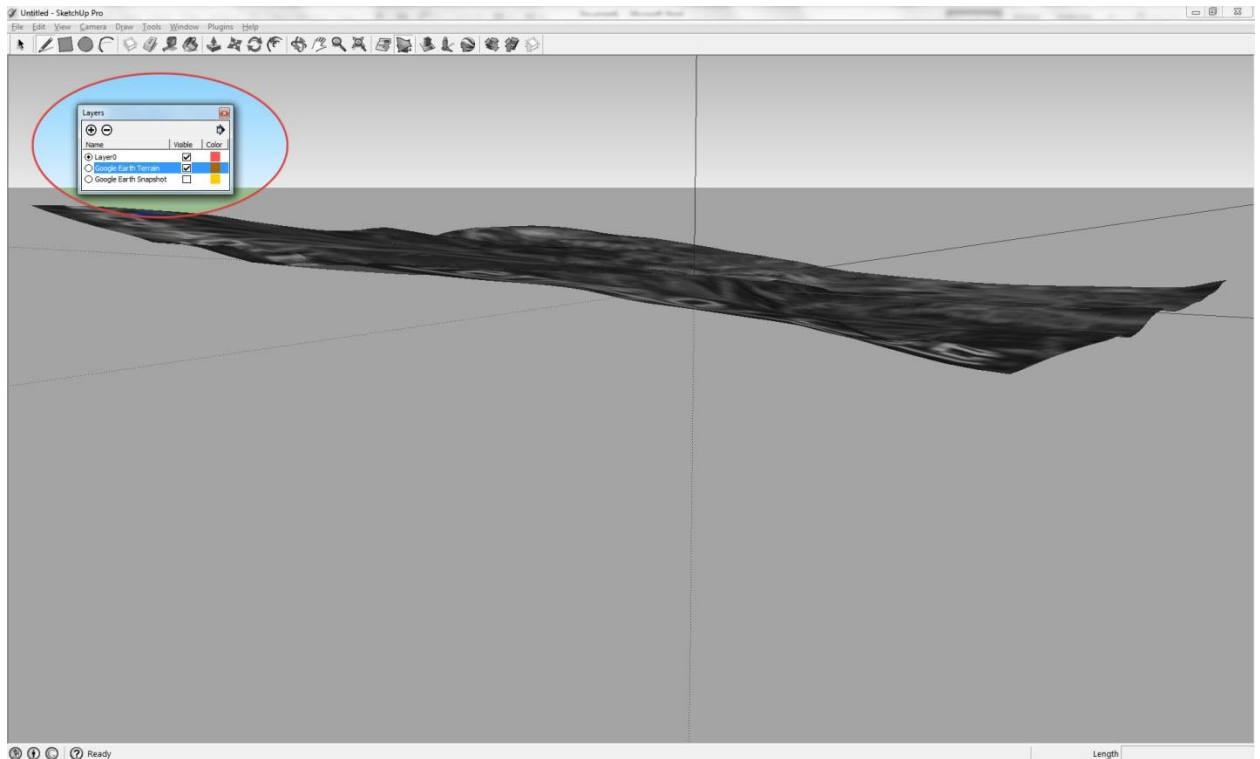
Importing Google Earth Terrain to Google Sketchup BIM Wiki



7. In the 'Layers' window that appears, turn off 'Google Earth Snapshot' and turn on 'Google Earth Terrain' by toggling the checkbox under 'Visible'



Importing Google Earth Terrain to Google Sketchup BIM Wiki



8. You may now use the standard orbit, pan, and draw commands to create a simple mass model based in rough topography. This is great for the conceptual phases of design because it offers quick, contextual massing.

